

B.I.L.L. BOARD

Newsletter of the Berkshire Institute For Lifetime Learning
Fall 1997 • Volume 6 • Number 2

John Sears To Appear At A Special Convocation To Open Fall '97 Semester

B.I.L.L. will open the Fall Semester on Tuesday, September 9, with a brand new Inaugural Event, an Open House Convocation featuring John F. Sears, Executive Director of the Franklin and Eleanor Institute at the FDR Library in Hyde Park, New York.

The convocation will begin at 12:30 at the Boland Theater at Berkshire Community College.

The convocation will serve a double purpose, according to B.I.L.L. President, Ann Dulye. "We have been thinking for some time about an outstanding academic event to open each semester, and we are delighted that John Sears can provide us with the first in what we hope will be a semi-annual event. John's presentation also will provide an excellent orientation for members who plan to attend the B.I.L.L. Special Events visit to the FDR Library and Val-Kill on Sept. 15."

Dr. Sears will discuss the FDR Library and its extensive collection of Presidential archives and memorabilia, Val-Kill, Eleanor Roosevelt's own retreat, the Franklin and Eleanor Roosevelt Institute and the program for action to mark the 50th anniversary of the Universal Declaration for Human Rights, which was chaired by Mrs. Roosevelt.

Dr. Sears received his Ph.D. in American Studies at Harvard and has taught at Tufts, Boston University and Vassar College. He is the author of "Sacred Places: American Tourist Attractions in the Nineteenth Century", and editor of "A new Deal for America, 1933-1945: The FDR Era", "Franklin D. Roosevelt and the Future of Liberalism" and "FDR As Seen By His Contemporaries: Foreign Perceptions of an American President".

— Robert Chandler

We're Going To Hyde Park — A Really Special Event!

What a unique combination of circumstances! Almost coincident with the appearance of John Sears as guest speaker at the Opening Convocation of the Fall 1997 Semester, the Special Events Committee, chaired by Lillian Cohen, has arranged a visit to the Franklin Delano Roosevelt Museum and Library in Hyde Park, New York. The 1826 house remains almost exactly as it was at the time of the President's death in 1945. We will have an opportunity to visit the Rose Garden with its gravesite marked with a simple monument. We will also visit Val-Kill, the cottage that Eleanor Roosevelt used as her retreat until her death in 1962.

Our trip is Monday, September 15, 1997 and space is limited. Don't miss this opportunity to relive history. Our Event Leader is Arline Gilbert (413)-637-1114. B.I.L.L. member charge is \$30; non-members, \$35.

A Great Day At Saratoga

The Saratoga State Park with its Saratoga Performing Arts Center was the destination for eighty-seven B.I.L.L. members and their guests on Thursday, July 24th. We had a very busy, most enjoyable day. On the agenda were a matinee program by the New York City Ballet, a tour of the National Dance Museum and a buffet luncheon at the historic Hall of Springs Dining Room. It was superb.

On the way home we took a written survey of reactions and all of the seventy-one respondents rated the trip, "Highly Worthwhile".

When asked what participants liked about the trip, "Everything" was the most common response, followed

by the "The whole day was a joy; the leaders were exceptionally well organized and very pleasant". Also coming in for commendation were the "lunch", "the buses" and "the drivers".

As part of the Special Events Committee's drive to constantly improve our future programs, we also solicited thoughts from the attendees and received several very useful suggestions, all of which will receive very careful review.

All in all, it was another very suc-



B.I.L.L. members on tour at SPAC

cessful event and I want to thank everyone who helped make it so. On to Hyde Park and Val-Kill!!

— Shirley Clark, Event Leader

President's Letter

Dear Members,

Welcome Back to the Fall session of B.I.L.L.

Several weeks ago you received our Fall course catalogue, which promises another session of exciting learning opportunities. With the additional seating capacity of BCC's Little Theater (for most of our lectures), you are encouraged to sign up for the additional free courses when registering for two or three classes. To date, a major number of B.I.L.L. members have sent in their renewal of memberships and registrations for classes. Show our Fall Catalogue, which has received wide recognition

and praise, to a friend; and extend an invitation to join us on the opening day, Tuesday, Sept. 9th, at our first convocation. Additional catalogues are available in the B.I.L.L. office.

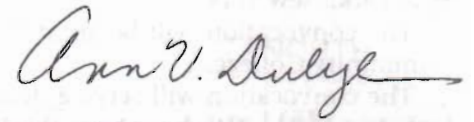
Many thanks to the Curriculum Committee. Your commitment to develop courses that are in keeping with the purposes and objectives of B.I.L.L. is most evident in this Fall's outstanding offerings.

The Special Events Committee launched one of the most successful trips to date, with the program at SPAC, which will be scheduled as an annual event.

B.I.L.L.'s success is dependent on

the full participation of every member. We need your ideas and involvement in all facets of our operations—from attending courses to joining one of the many committees which plan special events, curriculum, membership and communications. The rewards of working within the organization are significant and gratifying. I can personally attest to that. And so can the hundreds of fellow members who lend a hand to guiding our growth.

Have fun learning and let us hear from you!



B.I.L.L. Officers and Committees

Founders

Tom & Judy Eaton

Ex-Officio President, 1996-97

Len Stolzberg

President

Ann Dulye

1st Vice President

Norman Avnet

2nd Vice President

Ilse Browner

Secretary

Judy Easton

Treasurer

Walter Leon

Directors-At-Large

Robert Chandler

Jerome Light

Susan Phillips

Anna Pollack

Jack Rubin

Arthur Sherman

Chairpersons

Ellie Sack, Curriculum Committee

Lillian Cohen, Special Events

Committee

Ileen Cohen, Membership

Committee

Ron Gilbert, Media Committee

Howard Gorfiam, Finance

Committee

Elliott Vines, Winter Lecture Series

B.I.L.L. BOARD Editorial Staff

Arthur Sherman, Editor

Carol Sabot

Marjorie Lewis

Marilyn Flaum

Susan Orenstein

Donald Zaik

Harlan Williams

Sharon Mack

Harriet Vines

Lenore Rubin

Kenneth Beam

B.I.L.L. Committees Carry On Their Work

The work of B.I.L.L. is conducted by its members serving on a variety of committees. The work is creative and provides unique opportunities to meet and interact with quality people. If, when you read about what is going on and want to participate, please contact the chairperson and get involved. You'll enjoy it!

CURRICULUM COMMITTEE

Months of planning, discussion and research, and sometimes disappointments, and then it all comes together. We have a catalogue, with great courses and instructors!!! The new semester begins.

And we have already made deep inroads into the Spring 1998 semester to follow. Already some very exciting courses and concepts have been defined and you will learn more about them in the months to come.

After all, that's our job; to create the most stimulating courses, taught by outstanding professionals as well as talented peer group leaders.

We invite you to join the excitement of making wonderful things happen.

— Ellie Sack, Chairperson

SPECIAL EVENTS COMMITTEE

In addition to the various course offerings and lecture series, B.I.L.L. members participate in special events which enable them to socialize, travel to special exhibits, visit interesting historical sites, listen to great music, view the treasures of the world and experience the special world of theater and dance.

Our trips to Kykuit and Saratoga were very successful. The pending trip to Hyde Park and Val-Kill is almost upon us, and we are developing a November trip to the Boston Symphony Orchestra and Museum of Fine Arts for an exhibit of the early years of Picasso. We have major activities planned for New Years Day and Spring 1998 with a visit to the Smith College Museum and Spring Bulb Display. Won't you join us?

— Lillian Cohen, Chairperson

MEMBERSHIP COMMITTEE

B.I.L.L.'s strength resides in the enormous human resources of our more than 500 members. Our Committee's purpose is to recruit and better understand the interests, experience and capabilities of our members so that our programs make the best use of their talents and best reflect their needs.

(continued on page 6)

TODAY'S HEADLINES (Jack Rubin)

Are you seeking understanding of the apparent lack of world crises? Interested in what's happening locally? Want to express some thoughts or opinions in a friendly and provocative environment? Care to hear what somebody else thinks? You'll never have a better chance!! Join us at our new, more convenient time of Tuesdays at 11:00 AM.

THE MURDER MYSTERY

(Dr. Carol Owens)

Everyone loves a murder mystery, from past presidents to present pastors, but why? Are we a blood thirsty culture satisfying our dark side, or in fact, are those who love a murder mystery really the most law abiding among us? As the author of the mystery, "The Lost Days of Agatha Christie", and a therapist we will enjoy analyzing the murder mystery together. We will discuss and dissect the genre using your favorite mysteries and mystery writers.

JOAN OF ARC (Julie Lowell)

How's this for a plot? Ambitious men surround Henry VI, the baby King of England and France. He has been half-orphaned by the sudden death of his father, the redoubtable Henry V. Through his mother, Katherine, he is heir to the mad King's throne. The goal of his powerful English uncles is to hold all that was won at Agincourt. Across the Channel is the impoverished, ambivalent Dauphin, brother of the baby King's mother, son of the mad king, and titular heir of the Kingdom of France. Into this bizarre family scene, with France bleeding from a century of war and depredation, a young woman arrives, driven she declares by heavenly voices. Her mission is to raise the siege of Orleans and crown the rightful king. Joan the Maid is caught up in one of the most amazing experiences ever recorded. It took her from the pastures of Lorraine to fiery martyrdom in the square of Rouen.

SELECTED ISSUES IN AMERICAN HISTORY (Paul Flaum)

If the founding fathers came back today they would be amazed at how different our country is. Would they be pleased? Would they be horrified? Find out how we got from there to here in five easy lessons. the sixth will deal with the question, "Where do we go from here?" We should have some very interesting discussions and look forward to seeing you in class.

AT THE SEA'S EDGE; A NATURALIST'S VIEW OF THE COAST (Professor William Fox)

The edge of the sea is a strange and beautiful place. Where the land meets the sea, the human mind meets the mysteries of nature. This course will give you a deeper understanding of these mysteries, revealing the dynamic geological and biological processes that give the coastlines their shape and life. Together, we'll explore the vital forces of weather, waves and tides; we'll investigate the great variety of land forms and life forms;; we'll probe the remarkable secrets of the salt marshes, tidal flats, barrier islands and dunes. From New England's rocky shores to the Pacific beaches of the Northwest, from the Norwegian fjords to the Caribbean coral reefs, you will gain a new appreciation for the marvels of nature when you answer the call of the wild At The Sea's Edge. We look forward to seeing you in Williamstown.

MASTERS OF 20TH CENTURY ARCHITECTURE

(Professor E. J. Johnson)

The highlight of this course will be the acclaimed work of Frank Gehry, designer of the Guggenheim Museum in Bilbao, Spain. This structure, probably the most exciting building to be erected in the 20th century, will open officially in October, 1997. It is a "dramatically scaled limestone and titanium clad conglomeration of vertical and horizontal volumes, united off-center by an enormous glass walled atrium and topped by a cluster of organic forms suggesting a "metallic flower". It's construction was made

possible by the invention of the modern arch in the first decade of the century along with an advanced aerospace computer that made possible the fabrication of the irregularly shaped building elements. To find out more about this exciting century in the history of architecture and its most influential architects, join us in Williamstown.

BARBARIC YAWP: THE POETRY OF WALT WHITMAN

(Professor Paul Stein)

In "Song of Myself" Whitman writes:

"Behold, I do not give lectures or a little charity,

When I give, I give myself."

Who is this "I" speaking? We will try to identify this personality by how it reveals itself in the poetry.

"The spotted hawk swoops by and accuses me, he complains of my gab and my loitering.

I too am not a bit tamed, I too am untranslatable.

I sound my barbaric yawp over the roof of the world"

What does this passage suggest regarding our reading of his poetry? What instruction is he giving us?

These are the kinds of questions we will confront. We'll do a lot of reading in class and talking about our own reactions and responses. The emphasis will be on participation and discussion rather than lecture. Join us.

HEALTH & HEALING: ALTERNATIVE MEDICINE (Ellie Chandler)

How are you feeling? Come join us — you'll feel better!

Public interest in alternative/complementary medicine has increased dramatically in the last decade. One in three patients uses some form of alternative therapy. Recognizing this interest, Congress in 1992 created the Office of Alternative Medicine in the National Institute of Health. More and more insurers are covering some of the costs of alternative medicine.

Perceptions are changing, but questions still remain. For some it is

(continued on page 4)

Great Escapes

The Fall 1997 Catalog is replete with a broad selection of great courses and great instructors. One which is attracting great attention is "Great Escapes"; a program of six lectures dealing with some of the most interesting and exciting episodes in history. It was developed under the guidance of Priscilla and Rabbi Jack Stern. We asked them to tell us how it came about and this is what we learned.

"We, Priscilla and I, begin with a massive generalization; the adjective "great". Last year it was "Great Decisions". The year before it was "Great Trials". And this year it had to be "Great Something Else".

According to our criteria, the "something else" must be not only of engaging interest but also of historical importance. And, if possible, the "something else" would have to represent various segments of history, rather than only one or two.

Thus the process begins. Priscilla and I talk between ourselves and with our children, and then we talk to our friends (no dinner table company is spared), and then we bring the compendium of our possibilities to the Curriculum Committee. The response of the committee determines what should be eliminated and what should stay in the running. This year's final choice of "Great escapes" began as a suggestion of B.I.L.L.'s own Bob Chandler.

Then Step 2. Six sessions require six escapes. Again, we talk with family and friends and seek input from our Committee. The list of possible "escapes" numbered fifteen or twenty and all but the final six landed on the cutting room floor. What you will find there are such titles as, "Escape to the Suburbs", "Houdini's Escape" and "Psychological Escape Mechanisms". The chosen six remaining on top of the table made their way into your B.I.L.L. Catalog.

Then Step 3 (already in process during steps 1 and 2); the recruitment of our presenters. Our efforts in that direction have always been facilitated by the staff of Berkshire Community College and Williams College, who make specific suggestions regarding each topic in the series. Then we make our phone calls to the candidates, and we are continually impressed by the willingness of the professors, those retired and those still teaching, to participate in our programs. Unfailingly, their lectures have been of the highest quality.

And, of course, our series is especially enriched by our own "peer teachers", those from the ranks of B.I.L.L. who agree to do the necessary research, prepare the lecture and field the questions. As last year, Bob Chandler and Mort Levy are this year's peer teachers, and once again we shall be their eager students.

Thus, does it happen. Some will recall the very first session, several years ago, in the series on "Leadership". The presenter was Dr. Barbara Viniar, President of BCC, and she spoke of the difference between "vertical leadership", which promotes the dynamic of a hierarchy, and "horizontal leadership", which promotes the dynamic of a team. It is to the credit of our Curriculum Committee chairpersons through the years (most recently Ilse Browner and now Ellie Sack) that the Committee functions in a horizontal mode. And thus "Great Escapes" and all of the other "Greats", have been exclusively a great team effort.

— Rabbi Jack Stern

Expanded Registration Choices Announced

Many members take only one or two courses and do not have the chance to hear some of our other excellent lecturers. To help members broaden their B.I.L.L. experience the Curriculum Committee is making a special offer on a trial basis for this semester.

If you register for two courses, you may register for a third one at no additional charge.

If you register for three courses, you may register for two additional courses at no additional charge.

The Open House for the final session of each course last semester proved very popular. Heard frequently: "I wish I had taken this course — I didn't know the lecturer was so good. ..." Should we decide to hold a similar Open House again at the end of this coming Fall Semester, we will advise registrants of our intentions.

Members who will be away from the area for a part of the semester should not be put off by the prospect of missing one or two classes. Each of the courses is so structured that missing some classes will not lessen your enjoyment of the rest.

— Ilse Browner

Health & Healing continued from page 3

still a subject shrouded in mystery. For others, it is a new way to health and healing.

We are offer an opportunity to find out for yourself, with the help of six local practitioners who will cover such areas as chiropractic care, homeopathy, nutrition and the immune system, energy therapies, Chinese medicine, herbs and acupuncture.

Editor's Comments

We have tried in this issue to focus on coming events, and to give you some insight into the B.I.L.L. organization and programs. We were especially anxious to make sure that you had all of the necessary information to make your course selections and plans for special events.

This page is for input directly from the membership and to provide information about our members, places of interest they've been to and comments they have.

The success of this concept rests solely with you, — the Editorial Staff can do little without contributions and suggestions from you. Consider this your page. You help write it.

— Arthur Sherman

Letters To The Editor

To B.I.L.L. BOARD Editor:

On behalf of the Board of Directors and all the listeners of the Berkshire Talking Chronicle, I would like to thank B.I.L.L. for permitting us to tape courses for the benefit of our listeners.

The Berkshire Talking Chronicle is the non-profit radio reading service for the print handicapped. We read local newspapers daily to help keep our listeners in touch with what is happening in the county. The courses from B.I.L.L. are a very welcome addition to our program schedule, and we look forward to taping several courses in future offerings.

Our service is maintained by volunteers. Please call us at 413-684-0880 for more information.

— Alice Siegel, Executive Director

To B.I.L.L. BOARD Editor :

In reviewing the recently published catalog of B.I.L.L. courses to be offered in the Fall, I was disappointed to see that there were no courses which are geared to financial matters. Perhaps, because I am a CPA and attorney still working and spend my entire professional life dealing with clients' financial matters, I am sensitive to the failure to include this topic.

Along The Silk Road

The huge Xinjiang Uygur Autonomous Region in western China is an area inhabited by Muslim people of Indo-European ancestry. It is laden with natural resources (including oil), impassable deserts and yet, through it passed the ancient major trade routes between China and the West.

Cities, such as Xian, Lanzhou, Jiayuguan, Dunhuang, Turpan, Urumqi and Kashgar served as oases and transfer/branching points for the great caravans that traveled on across the treacherous Pamir Mountains into the Indian subcontinent and through Persia to the coast of the Mediterranean; a trade which reached its peak during the early hundreds of years of the Common Era.

Silk and other wealth of China was traded for the spices and metals of the West and, in even earlier times, this "Silk Road" was the primary route of entry into China for monks spreading Buddhism. Marco Polo came very late to the scene; by that time much of the earlier trade along this dangerous route had found alternatives in coastal sea voyages.

Driven by a curiosity about all of China, we committed a month of travel which combined this seldom visited region with the more conventional eastern Chinese cities and the Yangtse River.

It is difficult to describe the vastness and unique culture of this region in a short commentary; it is a throwback in time well over 1500 years. The ancient Sunday Bazaar in Kashgar, the Fiery Mountains, desert ruins and grottos of Turpan, the camel ride over the desert in a sandstorm, the enormity and preserved beauty of the grottos in Dunhuang, the Jiayu Fort — western terminus of the Great Wall, the trip on the Yellow River in Lanzhou and finally, the two thousand year old terra cotta warriors in Xian. In a word, "rugged" — but worth it.

— Arthur Sherman



At the Kashgar market

Although it is laudable to direct the organization's attentions to purely intellectual pursuits, I believe that some effort can be made successfully and beneficially to deliver pragmatic classes as well. Perhaps a "financial day" could be arranged in which issues important to a group composed of retirees or those approaching retirement would be covered. People in this category have specialized financial

needs. Various presenters could include stock brokers, investment advisors, estate planners, insurance and tax professionals experienced in matters important to retirees. Although not intended to make experts of all, such a program, conducted in a coordinated manner, would be of great value to many members.

— David L. Orenstein, Lenox

From Professor Richard Henneberry (Biology of Consciousness):

"Teaching in the B.I.L.L. program puts the fun back in the job. The students are there because they want to be, not just to fulfill a college requirement—and it shows in their curiosity and enthusiasm for the material. Also, B.I.L.L. students have the knowledge of a lifetime — specific and general knowledge — to bring into the classroom. I hope the students learned as much as I did. They kept me on my toes and I thoroughly enjoyed the experience."

From Professor James Rosenberg (Poetry Course):

"Just a note to thank you for giving me the opportunity to teach again in the B.I.L.L. Program. I enjoyed every minute of it—I can only hope the members of the class did, too — and I stand ready to do it again any time, any place...."

From Ms. Susan Devenney Wyner (Conducting Class in the Music Course):

"...I enjoyed the interaction with the participants enormously. The combination of enthusiasm, curiosity and life experience each brings is a very moving force."

From Professor Herbert Parmet (The Presidency):

"Lecturing at B.I.L.L. was a very stimulating and delightful experience. The exchanges were most enjoyable — there were tangible gains being accomplished because of the informed responses of the class."

Check us out for all news events and happenings at the BCC WEB site!! (<http://www.cc.berkshire.org>)

No we've not been caught by a spider. The World Wide Web is an important medium of information exchange throughout the world. It is sometimes confusing for people, especially those who are relatively new to the computer age. But, the reality is that all kinds of organizations, research and educational facilities increasingly are using this medium to convey information and conduct transactions among their members. B.I.L.L. intends to be among them.

It is important to let others know what we're doing and share information so that we can continue to upgrade our own programs.

— Harlan Williams

B.I.L.L. Committees continued from page 2

Obviously, member recruitment, catalog mailings, hospitality and enrollment of students and staffing the reception for our Annual Meetings are all part of what we do. We hope to begin developing a database of our members' interests and experience so that we may all benefit from the wealth of talent all around us.

We welcome new members to our Committee. It's a wonderful opportunity to meet new people and get involved. — Ileen Cohen, Chairperson

MEDIA COMMITTEE

The committee has undertaken many challenging new programs to assist the community at large through the auspices of the "Berkshire Talking Chronicles". Steps are in progress to audio tape several of the lectures and courses this coming season, and the committee has plans to develop a B.I.L.L. audio-visual library which will contain the audio tapes and videos of various lectures and special events. Several of these might well be aired on the local Public Access TV Station.

What we need to succeed in achiev-

ing our ambitious goals are additional people who are interested in audio-visual activities. Please join us. You will find this a very rewarding experience.

— Ron Gilbert, Chairperson

FINANCE COMMITTEE

The continued growth of B.I.L.L. membership and the increasing numbers of courses and events makes it essential that we have in place proper financial management of our affairs.

Our committee assures the financial integrity of B.I.L.L. activities by exercising budgetary control over all revenues and expenses. As do all committees, we work closely with the Board and when necessary, recommend changes in membership or course fees in order to maintain a balanced budget.

All of our fee revenues and accounts payable vouchers are processed through Williams College with a complete audit trail and monthly reporting.

If you have an interest in working with us, we would love to hear from you. — Walter Leon, Treasurer

WINTER LECTURE SERIES

We're charting a course for the coming winter season. Given the great response to our offerings last winter, we are investigating additional locations and have prepared a "wish list" of top flight speakers. Contact has been made with several candidates and already, we have received acceptances from several of them. We believe that once again we will enliven our members' winter in the Berkshires.

The committee always seeks new ideas and potential speaker candidates and we ask that you let us know of any suggestions, based on your own experience.

— Elliott Vines, Chairperson

Lillian Cohen Improving

All of us extend to Lillian Cohen our sincerest hopes for a speedy recovery from her surgery and our appreciation for all of her efforts. We look forward to her contributions to B.I.L.L.

Registration Continues To Grow

We would like to acknowledge at press time our new members.

Francine and Stanley Adelman, Andrew Campol, Barbara Caplin, Michael Feltzer, Helen and Milton Fink, Sally Fox, Ruth Gutmann, Ina Hunt, Carole and Solomon Israel, Ruth Kerbel, Barbara and Bertram Lewis, Lynn Mekinda, Irene and Herbert Messinger, Enid Michelman, Cynthia Nordeen, Joseph Pizzonia, Ellen Plageman, Marian Raser, Jean Robertson, Claire Rooke, Celeste Savage, Nancy Van Alstyne, Catherine Walter, Ida Weitz, Shirley Zemsky.

The Postmaster Has Spoken

The Postmaster has informed us that bulk mail, which B.I.L.L. uses for its Berkshire County mail, is not forwarded but is discarded. Therefore, you must advise the office (469-4660 ext. 379) of your temporary forwarding address with dates, whenever you are away from Berkshire County so we can send the mail to you directly. Otherwise, you will not receive your Catalog, issues of B.I.L.L. BOARD, or announcements of Special Events.

If you prefer, tell the office to continue to use your home address but to use First Class Mail for the dates you will be away. Then your mail will be forwarded.

— Ilse Browner

Getting To Know You

GERTRUDE KNEPPER

She winters in Pittsfield and summers in Cheshire, plays bridge, belongs to a poetry group at the Senior Center, has attended four Elder-hostels at Smith and one this summer at Hampshire College on the Philosophy of Art. She lunches three times a week at the Jewish Community Center and goes to openings at the Brooklyn Museum, near her former long-time home. Gertrude Knepper is a remarkable woman, a



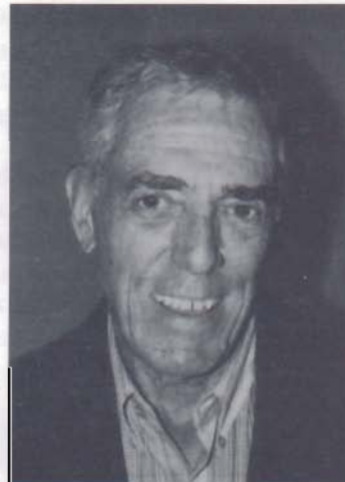
Theater Before Ibsen" Elderhostel she participated in, and hopes we have more courses with them.

— Carol Sabot

WALTER LEON

Meet Walter Leon, Treasurer of B.I.L.L. and past Finance Committee Chairman. Walter was born and raised in New Rochelle, N.Y. He became an Air Force navigator in WW II and then went to R.P.I. for an engineering degree. In 1956 he came to Pittsfield with GE and later became a consultant at General Systems, traveling around the US and even to Paris where he worked to a Fiat project.

Walter and Marie have been married for 47 years, have four children and five grandchildren, all residing relatively nearby. Since his retirement ten years ago he has spent time playing golf and bridge, traveling, gardening, reading and participating in a myriad of volunteer activities that include the US Archives in Pittsfield,



SCORE, YMCA, United Way and Counseling Center of the Berkshires.

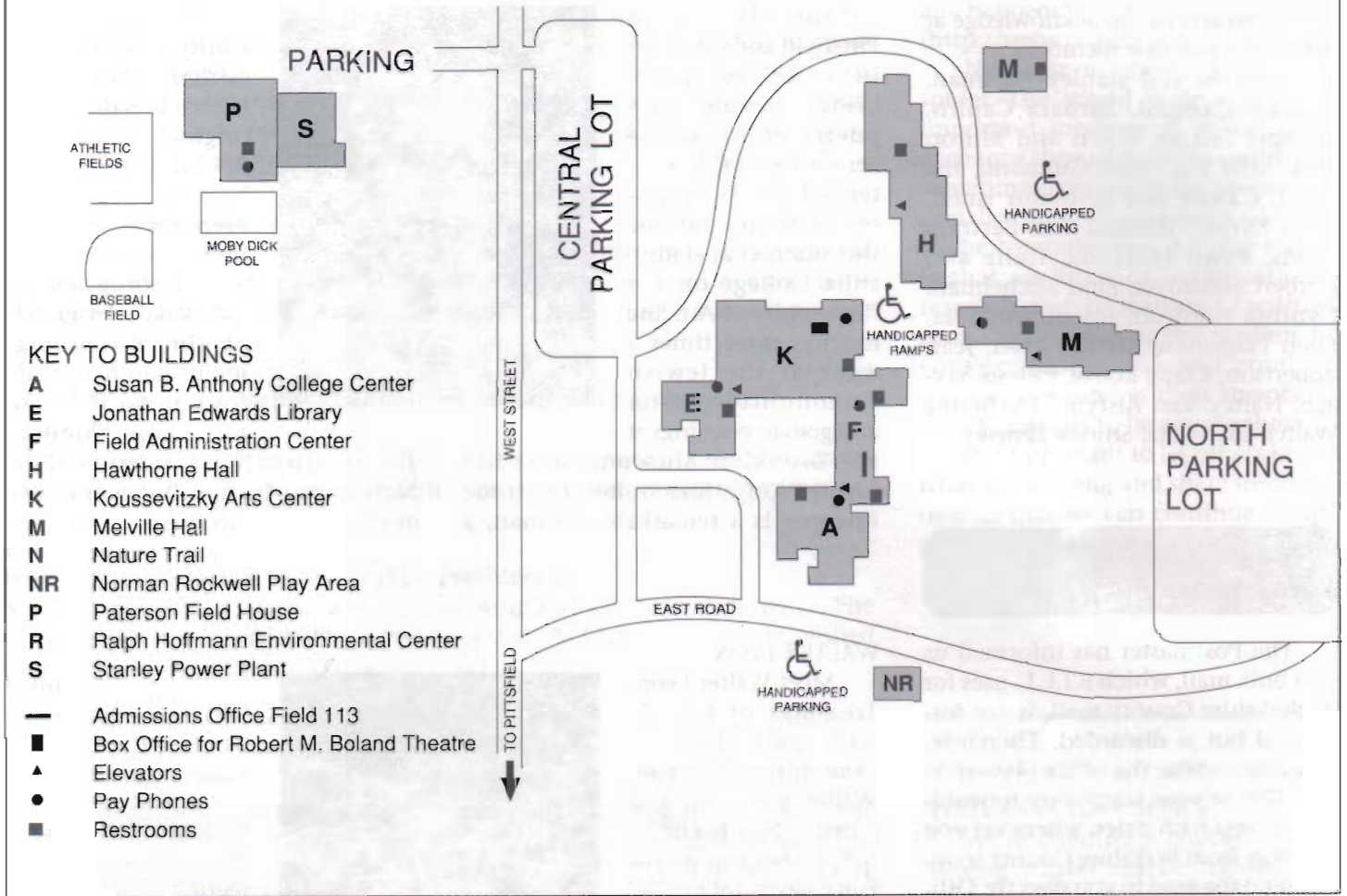
Fortunately for us, Walter has spent many hours volunteering for B.I.L.L., beginning as a member of the original steering committee. His comments: "The great thing is the fact that so many people in our age group keep their minds active and take

courses which are informal but high class and well done! There are still too many people who don't appreciate the quality of the courses that are being given. We should continue to grow and grow and grow. The Affiliation with BCC and Williams is wonderful; their support is great."

Thank you, Walter Leon for being part of our B.I.L.L. family.

— Sue Gorham

Berkshire Community College Campus Map



B.I.L.L.
 Berkshire Community College
 1350 West Street
 Pittsfield, MA 01201
 413-499-4660, ext. 379

NONPROFIT ORG.
 U.S. POSTAGE
 PAID
 PITTSFIELD, MA.
 PERMIT NO. 79



"... Education is a lifetime activity."